

SUNMI P2 PRO Smart Payment Terminal

Bezel-less, more powerful.



Ergonomics

Its 5.99" bezel-less screen and the ultra-slim (thinnest part 17.5mm) body all reflect SUNMI's never-ending pursuit of ergonomics.

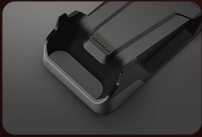
High Performance

Equipped with a high performance processor and a 2GB of RAM, P2 PRO features quick responses and smooth switches among Apps.

Convenient Data Capture

To read product barcodes, P2 PRO comes with a 1D barcode scan engine, thus to make it applicable in all retail scenarios.

Optional Accessory



SUNMI P2 PRO Cradle

A charging cradle & USB expander.



SUNMI P2 PRO Tech Specs

Product Model

T6920

OS

SUNMI OS
(*based on Android 7.1)

Processor

Cortex-A53 quad-core,
1.4GHz

Memory

1GB RAM+8GB ROM
2GB RAM+16GB ROM

Display

5.99" HD+, 1440*720
Capacitive multi-touch

Camera

Rear:
5MP, Flash, AF
1D/2D barcode scanning

Magstripe Reader

1/2/3 track card
Bidirectional reading
ISO 7810/7811 compliant

IC Card Reader

Smart IC card/logic encryption contact card
EMV/PBOC 3.0 compliant
5V/3V/1.8V

NFC Reader

Type A & B card, Mifare card, FeliCa card.
ISO/IEC 14443, qPBOC3.0, EMV, Paypass,
Paywave, FeliCa ISO18092 compliant.

Security

ANSI X9.8/ISO 9564, ANSI X9.9/ISO 16609, ANSI X 9.24-1, ANSI
X9.24-3, Master Key/Session Key, DUKPT, and ANSI X9 TR-31
compliant.
3DES, AES, RSA, SHA-256, SM2, SM3, SM4.

Printer

Built-in 58mm thermal
printer
Print speed: 70mm/s
Paper roll: φ 40mm max

Scanner

1D professional hardware
decoding scanner (Optional)

Speaker

1*0.8W

PSAM Card Slot

2* SAM
ISO 7816 compliant

SIM Card Slot

2* SIM

Network

2G & 3G & 4G

Wi-Fi

2.4GHz/5GHz
IEEE 802.11a / b / g / n

Bluetooth

Bluetooth 2.1/3.0/4.1
and BLE

GPS (Optional)

AGPS, GPS

Sensor

Gravity sensor

Weight

430g

Port

1* Type-C USB2.0 HS
OTG supported

Battery

Non-removable LiPo battery
7.6V/2580mAh

Power Adapter

Input: AC 100~240V
Output: DC 5V/2A

Dimensions (L*W*H)

224.9*84.2*17.5mm

Base (Optional)

Charging base,
supporting USB OTG

Buttons

1* Power on/off button (lock screen button)
2* Volume (+/-) button

Environment

Operating temp: -10°C~50°C
Storage temp: -20°C~60°C